

PRODUCT CODE

WRGH-xxx-xxx // WRGH - wattage - voltage



PRODUCT DESCRIPTION

The Warmup WRGH is a constant wattage roof de-icing system supplied in pre-terminated plug-in kits. It is offered in sizes from 30ft to 240ft, from 150W to 1,200W. It is supplied with roof-fixing clips.

SPECIFICATIONS

Operating voltage	120V
Output rating	5W/ft
Cold Tail length	6ft 18/3 cold lead with plug
Approvals	ETL, CSA



APPLICATION

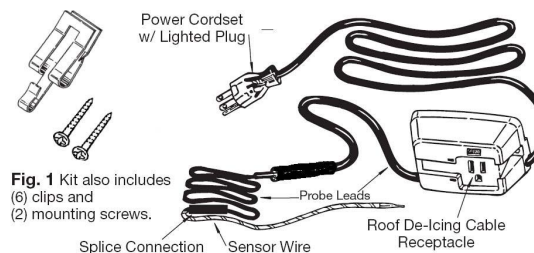
The Warmup WRGH kits are sold pre-assembled with a 3-prong plug in order to provide a simple, DIY solution to resolve ice dams and snow accumulation on roof lines.

While spacing will impact the eventual output, the WRGH cables are designed for residential use.

For heavy-duty and commercial applications, please refer to the NAMSR product range (submittal sheet WSC-0929) from Warmup.

- Not suitable for Pipe Freeze Protection
- Do not overlap or terminate cable
- Turn system off after the snow season
- Must be connected to GFCI protected outlet or breaker.

An optional WRS-2 Controller can be purchased to reduce usage and electrical draw when temperatures are above 40°F. It is highly recommended to increase product life and to reduce risk of fires or burn outs.

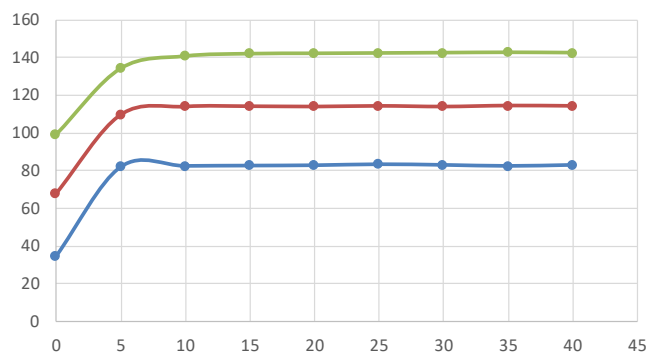


PRODUCT LISTING

Catalog Number	Length in Feet	Length in Meter
WRGH-150-1	30	9
WRGH-300-1	60	18
WRGH-400-1	80	24
WRGH-500-1	100	31
WRGH-600-1	120	37
WRGH-800-1	160	49
WRGH-1000-1	200	61
WRGH-1200-1	240	73

HEATING OUTPUT BY START-UP TEMPERATURE IN F

Tested Model.	WRGH-150-1		
Test time	2/25/2017	12:35	
Min.	Cable surface temperature		
	Ambient temp. 1	Ambient temp. 2	Ambient temp. 3
	30F (-1.1°C)	70F (21°C)	100F (37.8°C)
0	34.7	68	99.5
5	82.04	109.58	134.24
10	82.58	113.9	140.72
15	82.76	114.08	141.98
20	82.94	113.9	142.16
25	83.48	114.26	142.34
30	83.12	113.9	142.52
35	82.58	114.44	142.7
40	83.12	114.26	142.52





The world's **best-selling** electric floor heating brand™

WRGH - ROOF & GUTTER DE-ICING CABLE SUBMITTAL SHEET WSC-0810

WARRANTY & MAINTENANCE

When installed according to the installation manual, the WRGH is covered with Warmup's 1-year manufacturer warranty.

TECHNICAL SUPPORT

Warmup is available 24/7/365 at (888) 927-6333.

For quotes, layouts and specific technical information, contact us at:

Warmup USA

52 Federal Rd #1F, Danbury, CT 06810

(888) 927-6333

us@warmup.com

Warmup CANADA

(888) 592-7687

ca@warmup.com

RELATED PRODUCTS

- NAMS-R Roof - see WSC-0929
- WRS-2 Automatic roof De-icing Cable control