

PRODUCT SPECIFICATION SHEET

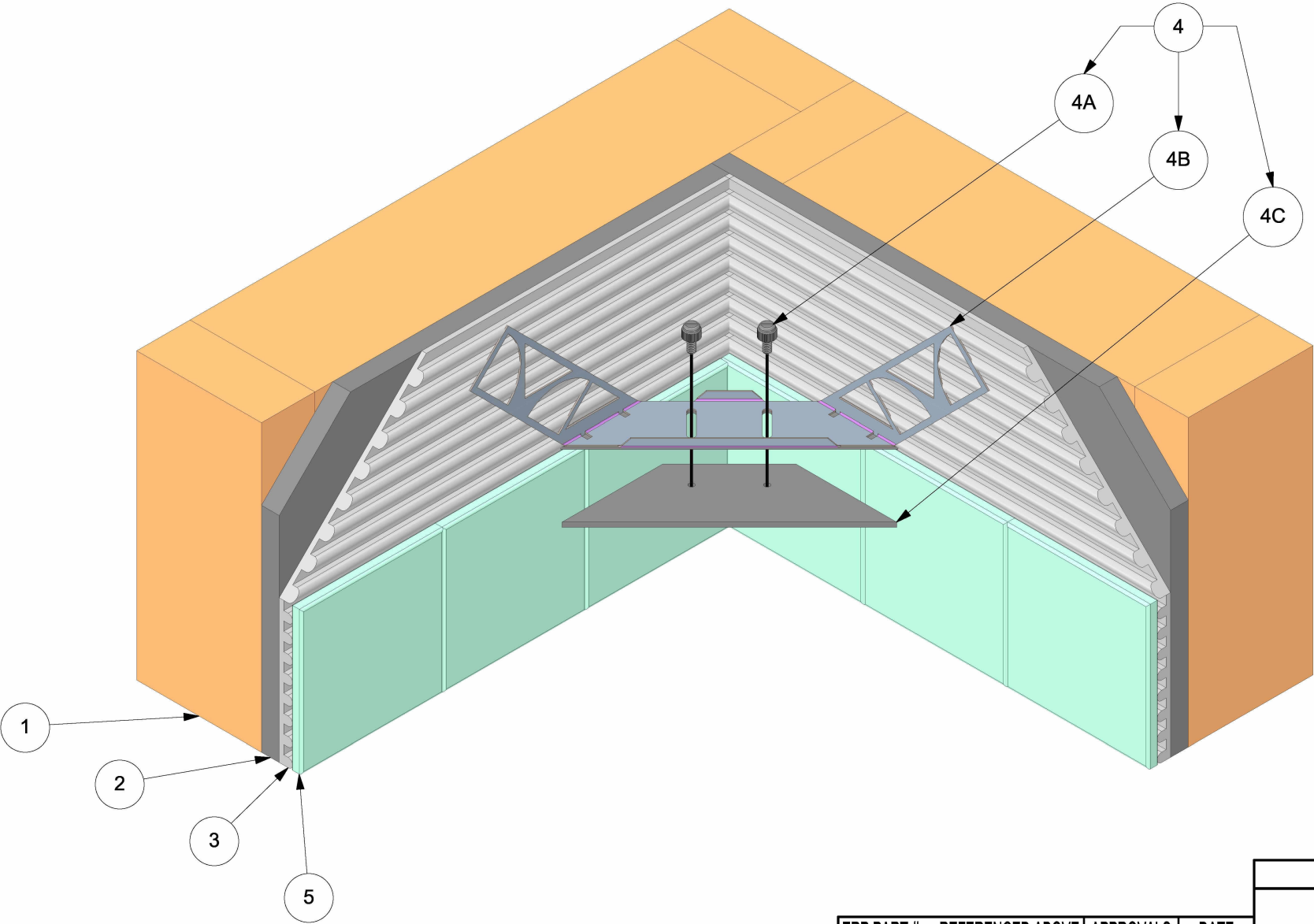
VICTORIA™ SERIES

PART: T210-001

FOOT PROP KIT

FINISHES: PC, BN, ORB

PERMATILE™ FASTENER SYSTEM WORKS WITH ALL MATERIAL THICKNESSES FROM - 5/32" TO 1/2"
MORTAR BASED INSTALLATION SYSTEM - NO MASTIC OR ORGANIC ADHESIVE ALLOWED!
REFER TO INSTALLATION INSTRUCTIONS BEFORE USE



TW-ENG6



TileWare Products

www.flooringsupplyshop.com

Tell 323-731-8453

ERP PART #	REFERENCED ABOVE	APPROVALS	DATE
DWG #	501	RLS	12/8/14
SHEET 1 OF 4	SCALE 1:3		
WEIGHT:	2.044 LB	CUBED:	9.161 IN³

PRODUCT SPECIFICATION SHEET

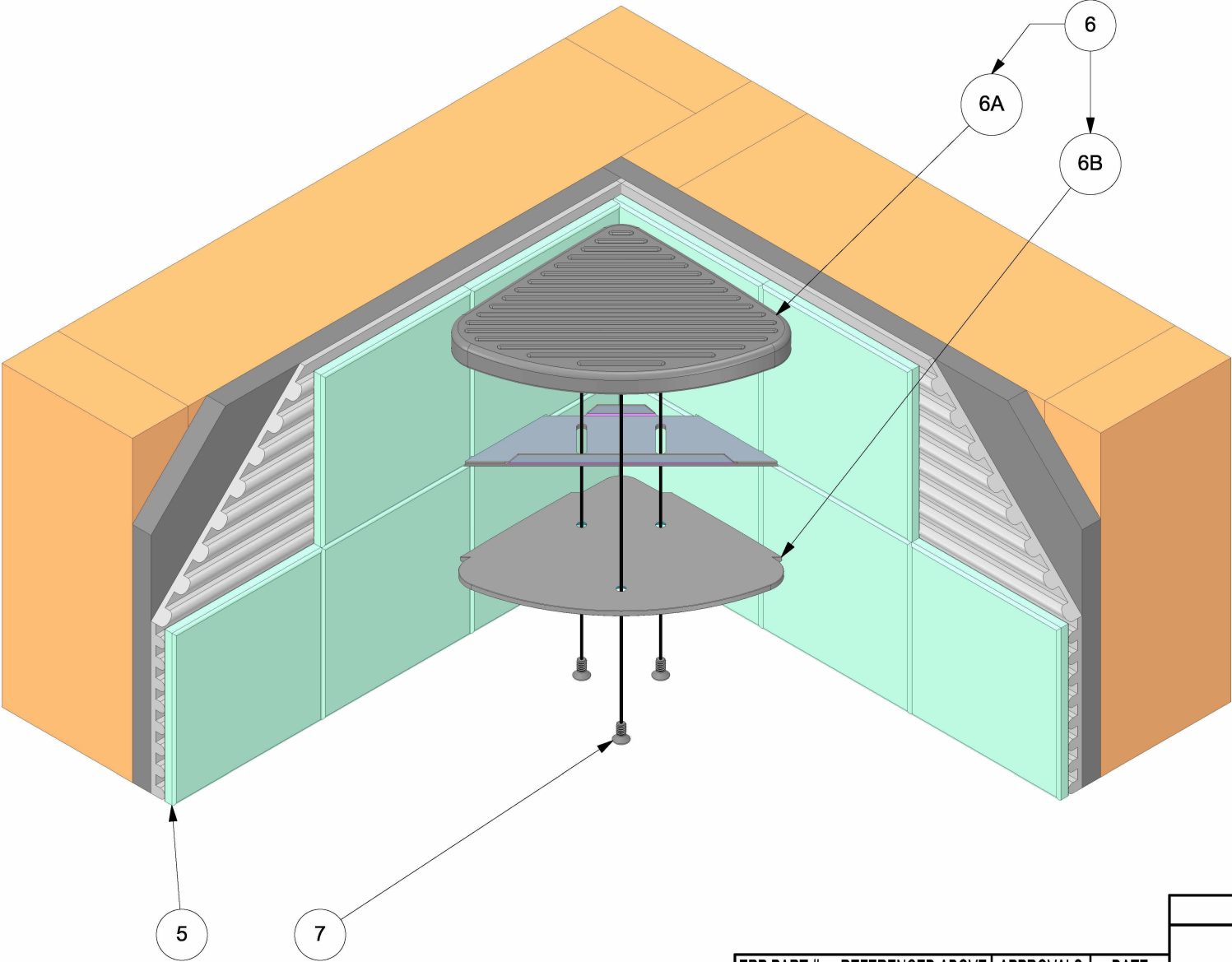
VICTORIA™ SERIES

PART: T210-001

FOOT PROP KIT

FINISHES: PC, BN, ORB

PERMATILE™ FASTENER SYSTEM WORKS WITH ALL MATERIAL THICKNESSES FROM - 5/32" TO 1/2"
MORTAR BASED INSTALLATION SYSTEM - NO MASTIC OR ORGANIC ADHESIVE ALLOWED!
REFER TO INSTALLATION INSTRUCTIONS BEFORE USE



TW-ENG6



TileWare Products

www.flooringsupplyshop.com

Tell 323-731-8453

ERP PART #	REFERENCED ABOVE	APPROVALS	DATE
DWG #	501	RLS	12/8/14
SHEET 2 OF 4	SCALE 1:3		
WEIGHT:	2.044 LB	CUBED:	9.161 IN ³

PRODUCT SPECIFICATION SHEET

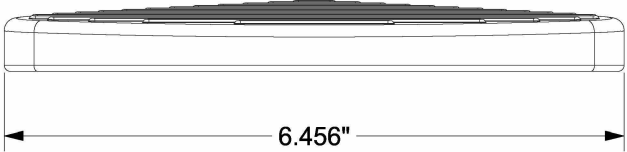
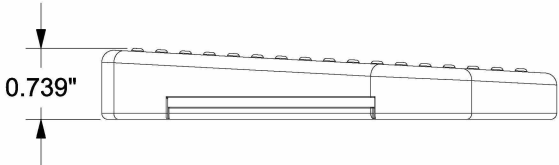
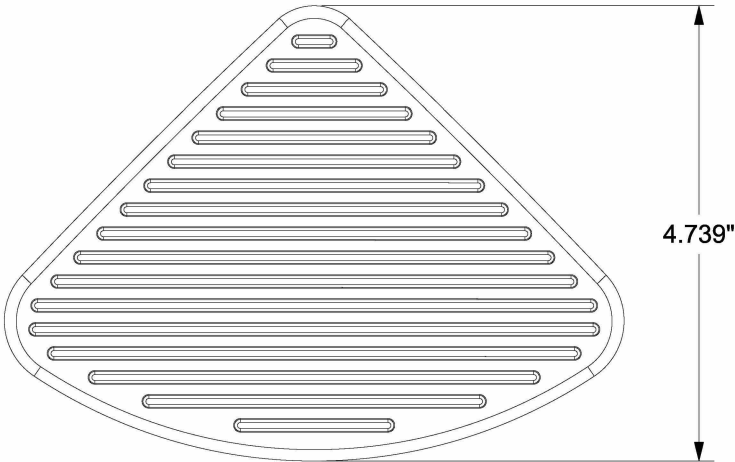
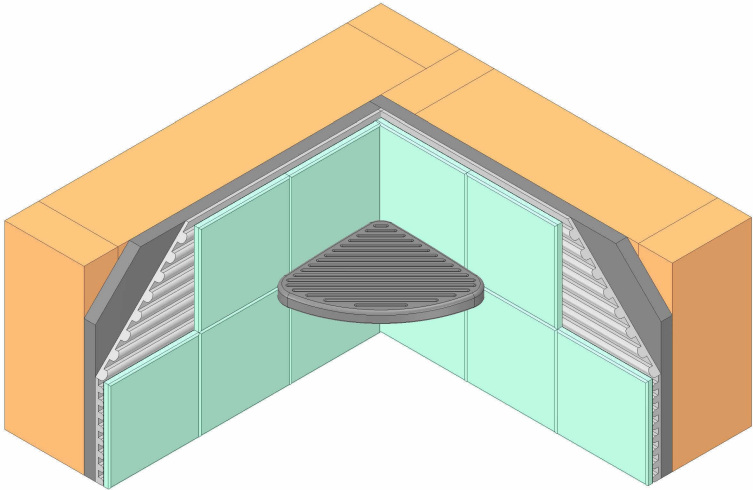
VICTORIA™ SERIES

PART: T210-001

FOOT PROP KIT

FINISHES: PC, BN, ORB

PERMATILE™ FASTENER SYSTEM WORKS WITH ALL MATERIAL THICKNESSES FROM - 5/32" TO 1/2"
MORTAR BASED INSTALLATION SYSTEM - NO MASTIC OR ORGANIC ADHESIVE ALLOWED!
REFER TO INSTALLATION INSTRUCTIONS BEFORE USE



ERP PART #	REFERENCED ABOVE	APPROVALS	DATE
DWG #	501	RLS	12/8/14
SHEET 3	OF 4	SCALE 1:3	
WEIGHT:	2.044 LB	CUBED:	9.161 IN³


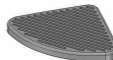
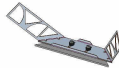
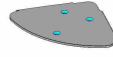


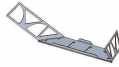
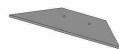
TW-ENG6



TileWare Products

www.flooringsupplyshop.com

Tell 323-731-8453

PRODUCT SPECIFICATION SHEET					PART: T210-001		PERMATILE™ FASTENER SYSTEM WORKS WITH ALL MATERIAL THICKNESSES FROM - 5/32" TO 1/2" MORTAR BASED INSTALLATION SYSTEM - NO MASTIC OR ORGANIC ADHESIVE ALLOWED! REFER TO INSTALLATION INSTRUCTIONS BEFORE USE				
VICTORIA™ SERIES					FOOT PROP KIT						
					FINISHES: PC, BN, ORB						
MODEL IMAGE	REF #	PART #	DESCRIPTION	MATERIAL	QTY	MODEL IMAGE	REF #	PART #	DESCRIPTION	MATERIAL	QTY
	1		STUD WALL PARTITION	WOOD			5		INSTALLED MATERIALS - 5/32" TO 1/2"	CERAMIC, GLASS PORCELAIN, STONE, ETC.	
	2		1/2" TILE BOARD	CEMENT FIBER FOAM			6	A300-001	FOOT PROP - TOP & BOTTOM	ZINC	1
	3		1/4" X 3/8" NOTCH TROWEL (ASTM - A118.4 & A118.11)	THIN-SET MORTAR			6A	C210-001	FOOT PROP - TOP	ZINC	1
	4	PT100-513	FOOT PROP CORNER WALL FASTENER (TILE) (ITEM SOLD ONLY AS A REPLACEMENT PART)	ASSEMBLY	1		6B	C210-002	FOOT PROP - BOTTOM	ZINC	1
	4A	C100-006	THUMB SCREW (ROUGH - IN COMPONENT, USED ONLY DURING FASTENER INSTALLATION)	NYLON	2		7	C200-029 OR C200-030	UNC 10-24 X 7/16" PHILLIPS OVAL HEAD SCREW (PC , BN) UNC 10-24 X 7/16" PHILLIPS OVAL HEAD SCREW (ORB ONLY)	STAINLESS STEEL BLACK OXIDE	3
	4B	A210-008	FOOT PROP STAMPING	ASSEMBLY	1						
	4C	C100-008	FOOT PROP STABILIZER (ROUGH - IN COMPONENT, USED ONLY DURING FASTENER INSTALLATION)	PLASTIC	1						

ERP PART # REFERENCED ABOVE APPROVALS DATE

DWG #