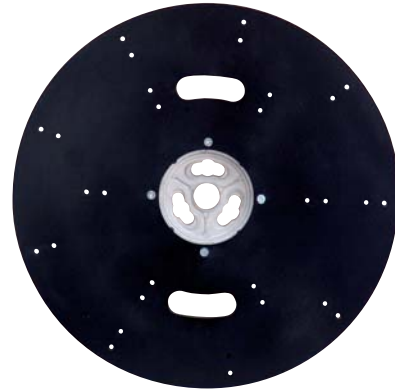


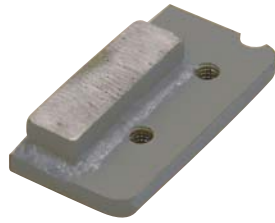
MADE IN ITALY



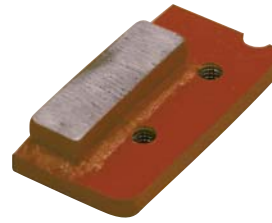
274CV100G24 274CV100G40 274CV100G60 274CV100G80  
274CV100G100 274CV100G120



250PSDA



250P24G



250P24R

- The zirconium abrasive discs Ø 115 mm (4 1/2") must be used only with planetary (free floating or geared).
- The zirconium abrasive discs Ø 115 mm (4 1/2") allow the finishing / polishing of parquet, wood flooring, cement, marble, etc...
- The disc with diamond segments allows to remove, roughen, scarifying of cement, marble, granite, etc..
- The disc with diamond segments allows to remove hard adhesives.
- Diamond segment are replaceable.

ZIRCONIUM ABRASIVE DISCS WITH VELCRO ATTACHMENT

| Part No.     | Barcode       | Quantity | Description                                     | Ø               | Grain | Length       | Width      | Weight           |
|--------------|---------------|----------|---|-----------------|-------|--------------|------------|------------------|
| 274CV100G24  | 8024648015617 | 24       | Zirconium abrasive discs with Velcro attachment | 115 mm - 4 1/2" | 24    | 10x10xh 5 cm | 4"x4"xh 2" | 0,5 Kg   16.9 oz |
| 274CV100G40  | 8024648015624 | 24       | Zirconium abrasive discs with Velcro attachment | 115 mm - 4 1/2" | 40    | 10x10xh 5 cm | 4"x4"xh 2" | 0,5 Kg   16.9 oz |
| 274CV100G60  | 8024648015631 | 24       | Zirconium abrasive discs with Velcro attachment | 115 mm - 4 1/2" | 60    | 10x10xh 5 cm | 4"x4"xh 2" | 0,4 Kg   13.2 oz |
| 274CV100G80  | 8024648015648 | 24       | Zirconium abrasive discs with Velcro attachment | 115 mm - 4 1/2" | 80    | 10x10xh 5 cm | 4"x4"xh 2" | 0,4 Kg   13.2 oz |
| 274CV100G100 | 8024648015938 | 24       | Zirconium abrasive discs with Velcro attachment | 115 mm - 4 1/2" | 100   | 10x10xh 5 cm | 4"x4"xh 2" | 0,3 Kg   10.1 oz |
| 274CV100G120 | 8024648015655 | 24       | Zirconium abrasive discs with Velcro attachment | 115 mm - 4 1/2" | 120   | 10x10xh 5 cm | 4"x4"xh 2" | 0,3 Kg   10.1 oz |

DISC HOLDER FOR DIAMOND SEGMENTS

| Part No. | Barcode       | Quantity | Description  | Ø      | Length | Weight            | Dimensions                   | Weight            |
|----------|---------------|----------|--|--------|--------|-------------------|------------------------------|-------------------|
| 250PSDA  | 8024648060259 | 1        | Disc holder for diamond segments (segments not included) | 530 mm | 21"    | 6,2 Kg   13.7 lbs | 53x53xh 10 cm   21"x21"xh 4" | 7,2 Kg   15.8 lbs |

DIAMOND SEGMENTS

| Part No. | Barcode       | Quantity | Description                | Grain | Applications                  | Length       | Width                  | Weight           |
|----------|---------------|----------|----------------------------|-------|-------------------------------|--------------|------------------------|------------------|
| 250P24G  | 8024648060266 | 12       | Diamond segment 12x40xh8mm | 24    | For roughing, removing cement | 12x12xh 7 cm | 4 3/4"x4 3/4"xh 2 3/4" | 2,5 Kg   5.5 lbs |
| 250P48R  | 8024648060754 | 12       | Diamond segment 12x40xh8mm | 48    | For roughing, removing cement | 12x12xh 7 cm | 4 3/4"x4 3/4"xh 2 3/4" | 2,5 Kg   5.5 lbs |

TOOLS/MACHINES COMBINATIONS

| Part No.     | Description   | IPERTITINA PLUS | IPERTITINA | MAXITITINA | SUPERTITINA | MICROTITINA |
|--------------|---|-----------------|------------|------------|-------------|-------------|
| 274CV100G24  | Zirconium abrasive discs Ø 115 mm (4 1/2") with Velcro attachment – grain 24  | •               | •          | -          | -           | •           |
| 274CV100G40  | Zirconium abrasive discs Ø 115 mm (4 1/2") with Velcro attachment – grain 40  | •               | •          | -          | -           | •           |
| 274CV100G60  | Zirconium abrasive discs Ø 115 mm (4 1/2") with Velcro attachment – grain 60  | •               | •          | -          | -           | •           |
| 274CV100G80  | Zirconium abrasive discs Ø 115 mm (4 1/2") with Velcro attachment – grain 80  | •               | •          | -          | -           | •           |
| 274CV100G100 | Zirconium abrasive discs Ø 115 mm (4 1/2") with Velcro attachment – grain 100 | •               | •          | -          | -           | •           |
| 274CV100G120 | Zirconium abrasive discs Ø 115 mm (4 1/2") with Velcro attachment – grain 120 | •               | •          | -          | -           | •           |
| 250PSDA      | Disc holder for diamond segments (segments not included) Ø 530 mm (21")       | •               | •          | •          | -           | -           |
| 250P24G      | Diamond segment 12x40xh8mm (1/2"x1 1/2"xh 3/8") – grain 24 (for cement)       | •               | •          | •          | -           | -           |
| 250P48R      | Diamond segment 12x40xh8mm (1/2"x1 1/2"xh 3/8") – grain 48 (for cement)       | •               | •          | •          | -           | -           |



# DIAMOND PADS FOR IPERTITINA AND MICROTITINA WITH MAGNETIC ATTACHMENT

MADE IN ITALY



- The metal-bounded and resin-bounded diamond pads are available in several grits and allow the polishing and refinishing of marble, granite, terrazzo, "venetian" floors, cement, etc. . .
- The metal-bounded diamond pads (with diamond segments) allow the roughing / grinding

- of porcelain tiles, marble, granite, cement, etc. . .
- Changing the satellite tools is quick, easy and safe thanks to the "magnetic" attachments.
- Diamond pads must be used with the geared planetary only (3 or 6 satellites).

## METAL-BOUNDED DIAMOND PADS WITH MAGNETIC ATTACHMENT

| Part No.            |               |   | Description                          |               |         |                                       |                |
|---------------------|---------------|---|--------------------------------------|---------------|---------|---------------------------------------|----------------|
| <b>274DG040/050</b> | 8024648056832 | 3 | Metal-bounded diam. pads - mag. att. | 115 mm 4 1/2" | 40/50   | 12x12x h 7 cm 4 3/4"x4 3/4"x h 2 3/4" | 1,7 Kg 3.7 lbs |
| <b>274DG100/120</b> | 8024648056849 | 3 | Metal-bounded diam. pads - mag. att. | 115 mm 4 1/2" | 100/120 | 12x12x h 7 cm 4 3/4"x4 3/4"x h 2 3/4" | 1,7 Kg 3.7 lbs |
| <b>274DM040/050</b> | 8024648056979 | 3 | Metal-bounded diam. pads - mag. att. | 115 mm 4 1/2" | 40/50   | 12x12x h 7 cm 4 3/4"x4 3/4"x h 2 3/4" | 1,7 Kg 3.7 lbs |
| <b>274DM100/120</b> | 8024648057976 | 3 | Metal-bounded diam. pads - mag. att. | 115 mm 4 1/2" | 100/120 | 12x12x h 7 cm 4 3/4"x4 3/4"x h 2 3/4" | 1,7 Kg 3.7 lbs |
| <b>274DC040/050</b> | 8024648056818 | 3 | Metal-bounded diam. pads - mag. att. | 115 mm 4 1/2" | 40/50   | 12x12x h 7 cm 4 3/4"x4 3/4"x h 2 3/4" | 1,7 Kg 3.7 lbs |
| <b>274DC100/120</b> | 8024648056825 | 3 | Metal-bounded diam. pads - mag. att. | 115 mm 4 1/2" | 100/120 | 12x12x h 7 cm 4 3/4"x4 3/4"x h 2 3/4" | 1,7 Kg 3.7 lbs |

## RESIN-BOUNDED DIAMOND PADS CR TYPE WITH MAGNETIC ATTACHMENT

| Part No.           |               |   | Description                             |               |     |                                       |              |
|--------------------|---------------|---|---|---------------|-----|---------------------------------------|--------------|
| <b>274DTCR0030</b> | 8024648057570 | 3 | Resin-bounded diam. pads - mag. att. CR | 115 mm 4 1/2" | 30  | 12x12x h 7 cm 4 3/4"x4 3/4"x h 2 3/4" | 1,4 Kg 3 lbs |
| <b>274DTCR0075</b> | 8024648057587 | 3 | Resin-bounded diam. pads - mag. att. CR | 115 mm 4 1/2" | 75  | 12x12x h 7 cm 4 3/4"x4 3/4"x h 2 3/4" | 1,4 Kg 3 lbs |
| <b>274DTCR0150</b> | 8024648057594 | 3 | Resin-bounded diam. pads - mag. att. CR | 115 mm 4 1/2" | 150 | 12x12x h 7 cm 4 3/4"x4 3/4"x h 2 3/4" | 1,4 Kg 3 lbs |

## RESIN-BOUNDED DIAMOND PADS EPK TYPE WITH MAGNETIC ATTACHMENT

| Part No.           |               |   | Description                              |               |      |                                       |              |
|--------------------|---------------|---|--|---------------|------|---------------------------------------|--------------|
| <b>274DTPK0050</b> | 8024648057600 | 3 | Resin-bounded diam. pads - mag. att. EPK | 115 mm 4 1/2" | 50   | 12x12x h 7 cm 4 3/4"x4 3/4"x h 2 3/4" | 1,4 Kg 3 lbs |
| <b>274DTPK0120</b> | 8024648057617 | 3 | Resin-bounded diam. pads - mag. att. EPK | 115 mm 4 1/2" | 120  | 12x12x h 7 cm 4 3/4"x4 3/4"x h 2 3/4" | 1,4 Kg 3 lbs |
| <b>274DTPK0220</b> | 8024648057624 | 3 | Resin-bounded diam. pads - mag. att. EPK | 115 mm 4 1/2" | 220  | 12x12x h 7 cm 4 3/4"x4 3/4"x h 2 3/4" | 1,4 Kg 3 lbs |
| <b>274DTPK0400</b> | 8024648057631 | 3 | Resin-bounded diam. pads - mag. att. EPK | 115 mm 4 1/2" | 400  | 12x12x h 7 cm 4 3/4"x4 3/4"x h 2 3/4" | 1,4 Kg 3 lbs |
| <b>274DTPK0600</b> | 8024648057648 | 3 | Resin-bounded diam. pads - mag. att. EPK | 115 mm 4 1/2" | 600  | 12x12x h 7 cm 4 3/4"x4 3/4"x h 2 3/4" | 1,4 Kg 3 lbs |
| <b>274DTPK0800</b> | 8024648057655 | 3 | Resin-bounded diam. pads - mag. att. EPK | 115 mm 4 1/2" | 800  | 12x12x h 7 cm 4 3/4"x4 3/4"x h 2 3/4" | 1,4 Kg 3 lbs |
| <b>274DTPK1800</b> | 8024648057662 | 3 | Resin-bounded diam. pads - mag. att. EPK | 115 mm 4 1/2" | 1800 | 12x12x h 7 cm 4 3/4"x4 3/4"x h 2 3/4" | 1,4 Kg 3 lbs |
| <b>274DTPK3500</b> | 8024648057679 | 3 | Resin-bounded diam. pads - mag. att. EPK | 115 mm 4 1/2" | 3500 | 12x12x h 7 cm 4 3/4"x4 3/4"x h 2 3/4" | 1,4 Kg 3 lbs |

## RESIN-BOUNDED DIAMOND PADS EPR TYPE WITH MAGNETIC ATTACHMENT

| Part No.           |               |   | Description                              |               |     |                                       |              |
|--------------------|---------------|---|--|---------------|-----|---------------------------------------|--------------|
| <b>274DTPR0030</b> | 8024648057686 | 3 | Resin-bounded diam. pads - mag. att. EPR | 115 mm 4 1/2" | 30  | 12x12x h 7 cm 4 3/4"x4 3/4"x h 2 3/4" | 1,4 Kg 3 lbs |
| <b>274DTPR0080</b> | 8024648057693 | 3 | Resin-bounded diam. pads - mag. att. EPR | 115 mm 4 1/2" | 80  | 12x12x h 7 cm 4 3/4"x4 3/4"x h 2 3/4" | 1,4 Kg 3 lbs |
| <b>274DTPR0180</b> | 8024648057709 | 3 | Resin-bounded diam. pads - mag. att. EPR | 115 mm 4 1/2" | 180 | 12x12x h 7 cm 4 3/4"x4 3/4"x h 2 3/4" | 1,4 Kg 3 lbs |
| <b>274DTPR0600</b> | 8024648057716 | 3 | Resin-bounded diam. pads - mag. att. EPR | 115 mm 4 1/2" | 600 | 12x12x h 7 cm 4 3/4"x4 3/4"x h 2 3/4" | 1,4 Kg 3 lbs |
| <b>274DTPR1800</b> | 8024648057723 | 3 | Resin-bounded diam. pads - mag. att. EPR | 115 mm 4 1/2" | 800 | 12x12x h 7 cm 4 3/4"x4 3/4"x h 2 3/4" | 1,4 Kg 3 lbs |

## LIQUIDS AND POWDERS

| Part No.            |               |   | Description  |   |                 |
|---------------------|---------------|---|--|---|-----------------|
| <b>130CRISTBSLT</b> | 8024648074676 | 1 | Crystallizing liquid for marble and cement (tank capacity liters 5 / 1.32 gal) | 35x27xh 31 cm 13 3/4"x10 5/8"xh 12 1/4" | 6,5 Kg 14.3 lbs |
| <b>130CRISTPG</b>   | 8024648057952 | 1 | Polishing powder for granite (bucket capacity 5 Kg / 11 lbs)                   | 26x26x h 26 cm 10"x10"xh 10"            | 5,8 Kg 12.8 lbs |
| <b>130CRISTPM</b>   | 8024648057969 | 1 | Polishing powder for marble and cement (bucket capacity 5 Kg / 11 lbs)         | 26x26x h 26 cm 10"x10"xh 10"            | 5,8 Kg 12.8 lbs |
| <b>130IND ASLT</b>  | 8024648086914 | 1 | Hardener liquid for cement (tank capacity liters 5 lt / 1.32 gal)              | 35x27xh 31 cm 13 3/4"x10 5/8"xh 12 1/4" | 6,5 Kg 14.3 lbs |



# SUGGESTED SEQUENCES FOR POLISHING

## GRANITE (WET TREATMENT ONLY)

| ROUGHING     |              | POLISHING   |             |             |             |             |             |             |             | FINISHING  |
|--------------|--------------|-------------|-------------|-------------|-------------|-------------|-------------|-------------|-------------|------------|
| 274DG040/050 | 274DG100/120 | 274DTCR0030 | 274DTCR0075 | 274DTCR0150 | 274DTPR0180 | 274DTPK0220 | 274DTPK0400 | 274DTPK0800 | 274DTPK1800 | 130CRISTPG |
| 40/50        | 100/120      | 30          | 75          | 150         | 180         | 220         | 400         | 800         | 1800        | POWDER     |

## MARBLE (WET TREATMENT ONLY)

| ROUGHING     |              | POLISHING   |             |             |             |             |             |   |   | FINISHING |
|--------------|--------------|-------------|-------------|-------------|-------------|-------------|-------------|---|---|-----------|
| 274DM040/050 | 274DM100/120 | 274DTPK0050 | 274DTPK0120 | 274DTPK0400 | 274DTPK0800 | 274DTPK1800 | 274DTPK3500 | - | - | 130CRISTB |
| 40/50        | 100/120      | 50          | 120         | 400         | 800         | 1800*       | 3500*       | - | - | LIQUID    |

\*These grains are recommended for dark marbles only.

## TERRAZZO/AGGLOMERATES (WET TREATMENT)

| ROUGHING     |              | POLISHING I° STEP |             |             |          | POLISHING II° STEP |             |             |             | CRYSTALLIZATION |
|--------------|--------------|-------------------|-------------|-------------|----------|--------------------|-------------|-------------|-------------|-----------------|
| 274DC040/050 | 274DC100/120 | 274DTPR0030       | 274DTPR0080 | 274DTPR0180 | 130IND A | 274DTPK0220        | 274DTPK0600 | 274DTPK1800 | 274DTPK3500 | 130CRISTB       |
| 40/50        | 100/120      | 30                | 80          | 180         | HARDENER | 220                | 600         | 1800        | 3500*       | LIQUID          |

\*These grains are recommended for dark materials only.

## TERRAZZO/AGGLOMERATES (DRY TREATMENT)

| ROUGHING     |              | POLISHING I° STEP |             |             |          | POLISHING II° STEP |             |   |   | CRYSTALLIZATION |
|--------------|--------------|-------------------|-------------|-------------|----------|--------------------|-------------|---|---|-----------------|
| 274DC040/050 | 274DC100/120 | 274DTPR0030       | 274DTPR0080 | 274DTPR0180 | 130IND A | 274DTPR0600        | 274DTPR1800 | - | - | 130CRISTB       |
| 40/50        | 100/120      | 30                | 80          | 180         | HARDENER | 600                | 1800        | - | - | LIQUID          |

## CEMENT LAYERED WITH QUARTZ (WET TREATMENT)

| ROUGHING |   | POLISHING I° STEP |             |          | POLISHING II° STEP |             |   |   |   | CRYSTALLIZATION |
|----------|---|-------------------|-------------|----------|--------------------|-------------|---|---|---|-----------------|
| -        | - | 274DTPR0080       | 274DTPR0180 | 130IND A | 274DTPK0600        | 274DTPK1800 | - | - | - | 130CRISTB       |
| -        | - | 80                | 180         | HARDENER | 600                | 1800        | - | - | - | LIQUID          |

## CEMENT LAYERED WITH QUARTZ (DRY TREATMENT)

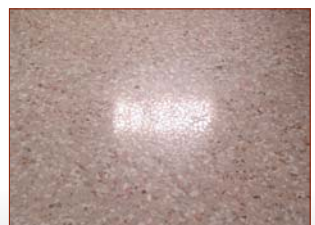
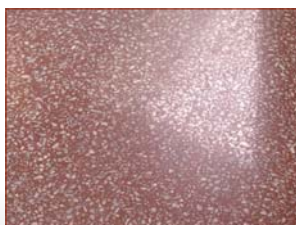
| ROUGHING |   | POLISHING I° STEP |             |          | POLISHING II° STEP |             |   |   |   | CRYSTALLIZATION |
|----------|---|-------------------|-------------|----------|--------------------|-------------|---|---|---|-----------------|
| -        | - | 274DTPR0080       | 274DTPR0180 | 130IND A | 274DTPR0600        | 274DTPR1800 | - | - | - | 130CRISTB       |
| -        | - | 80                | 180         | HARDENER | 600                | 1800        | - | - | - | LIQUID          |

## CEMENT (WET TREATMENT)

| ROUGHING     |              | POLISHING I° STEP |             |             |          | POLISHING II° STEP |             |             |   | CRYSTALLIZATION |
|--------------|--------------|-------------------|-------------|-------------|----------|--------------------|-------------|-------------|---|-----------------|
| 274DC040/050 | 274DC100/120 | 274DTPR0030       | 274DTPR0080 | 274DTPR0180 | 130IND A | 274DTPK0600        | 274DTPK1800 | 274DTPK3500 | - | 130CRISTB       |
| 40/50        | 100/120      | 30                | 80          | 180         | HARDENER | 600                | 1800        | 3500        | - | LIQUID          |

## CEMENT (DRY TREATMENT)

| ROUGHING     |              | POLISHING I° STEP |             |             |          | POLISHING II° STEP |             |   |   | CRYSTALLIZATION |
|--------------|--------------|-------------------|-------------|-------------|----------|--------------------|-------------|---|---|-----------------|
| 274DC040/050 | 274DC100/120 | 274DTPR0030       | 274DTPR0080 | 274DTPR0180 | 130IND A | 274DTPR0600        | 274DTPR1800 | - | - | 130CRISTB       |
| 40/50        | 100/120      | 30                | 80          | 180         | HARDENER | 600                | 1800        | - | - | LIQUID          |





# BRUSHES

MADE IN ITALY



335A 207A 165A  
335B 207B 165B  
207C 165C



335TINEX 207TINEX 165TINEX



337 209 166



338 208 228

PACKAGE



CARTON BOX

## BRUSHES

| Part No.        |               |   | Description                                |        |         |                                  |
|-----------------|---------------|---|--|--------|---------|----------------------------------|
| <b>335A</b>     | 8024648015754 | 1 | Stiff nylon brush (bristle 080)            | 3,6 Kg | 8 lbs   | 47x47xh 9 cm<br>18"x18"xh 3 1/2" |
| <b>335B</b>     | 8024648015761 | 1 | Medium nylon brush (bristle 065)           | 3,8 Kg | 8.4 lbs |                                  |
| <b>207A</b>     | 8024648002518 | 1 | Stiff nylon brush (bristle 080)            | 3 Kg   | 6.6 lbs |                                  |
| <b>207B</b>     | 8024648002525 | 1 | Medium nylon brush (bristle 065)           | 3,2 Kg | 7 lbs   |                                  |
| <b>207C</b>     | 8024648002532 | 1 | Soft nylon brush (bristle 025)             | 3,6 Kg | 8 lbs   |                                  |
| <b>165A</b>     | 8024648002549 | 1 | Stiff nylon brush (bristle 080)            | 2,1 Kg | 4.6 lbs |                                  |
| <b>165B</b>     | 8024648002556 | 1 | Medium nylon brush (bristle 065)           | 2,4 Kg | 5.3 lbs |                                  |
| <b>165C</b>     | 8024648002563 | 1 | Soft nylon brush (bristle 025)             | 2,7 Kg | 6 lbs   |                                  |
| <b>335TINEX</b> | 8024648015785 | 1 | Brush with abrasive bristles (bristle 1,5) | 3,8 Kg | 8.4 lbs |                                  |
| <b>207TINEX</b> | 8024648002631 | 1 | Brush with abrasive bristles (bristle 050) | 2,9 Kg | 6.4 lbs |                                  |
| <b>165TINEX</b> | 8024648002648 | 1 |  | 2,5 Kg | 5.5 lbs |                                  |
| <b>337</b>      | 8024648015792 | 1 |  | 4,3 Kg | 9.5 lbs |                                  |
| <b>209</b>      | 8024648002693 | 1 | Brass coated, steel-wire brush             | 3,5 Kg | 7.7 lbs |                                  |
| <b>166</b>      | 8024648002709 | 1 |  | 3,1 Kg | 6.8 lbs |                                  |
| <b>338</b>      | 8024648015808 | 1 |  | 3,8 Kg | 8.4 lbs |                                  |
| <b>208</b>      | 8024648002655 | 1 | Brush with vegetable fiber bristles        | 3,1 Kg | 6.8 lbs |                                  |
| <b>228</b>      | 8024648002662 | 1 |  | 2,4 Kg | 5.3 lbs |                                  |

| Part No.    | Applications         |        | MACHINE | Part No.           | Applications    |         | MACHINE           |                                    |         |                    |                   |        |                    |                    |
|-------------|----------------------|--------|---------|--------------------|-----------------|---------|-------------------|------------------------------------|---------|--------------------|-------------------|--------|--------------------|--------------------|
| <b>335A</b> | For general cleaning | 480 mm | 19"     | <b>IPERTITINA</b>  | <b>335TINEX</b> | 480 mm  | 19"               | <b>IPERTITINA PLUS, IPERTITINA</b> |         |                    |                   |        |                    |                    |
| <b>335B</b> |                      |        |         |                    | <b>207TINEX</b> |         |                   |                                    | 450 mm  | 17 3/4"            | <b>MAXITITINA</b> |        |                    |                    |
| <b>335C</b> |                      |        |         |                    | <b>165TINEX</b> |         |                   |                                    |         |                    |                   | 430 mm | 17"                | <b>SUPERTITINA</b> |
| <b>207A</b> |                      | 450 mm | 17 3/4" | <b>MAXITITINA</b>  | <b>337</b>      | 480 mm  | 19"               | <b>IPERTITINA PLUS, IPERTITINA</b> |         |                    |                   |        |                    |                    |
| <b>207B</b> |                      |        |         |                    | 450 mm          |         |                   |                                    | 17 3/4" | <b>MAXITITINA</b>  | <b>209</b>        | 450 mm | 17 3/4"            | <b>MAXITITINA</b>  |
| <b>207C</b> |                      |        |         |                    |                 |         |                   |                                    |         |                    | 430 mm            |        |                    |                    |
| <b>165A</b> |                      | 430 mm | 17"     | <b>SUPERTITINA</b> | <b>338</b>      | 480 mm  | 19"               | <b>IPERTITINA PLUS, IPERTITINA</b> |         |                    |                   |        |                    |                    |
| <b>165B</b> |                      |        |         |                    | 450 mm          |         |                   |                                    | 17 3/4" | <b>MAXITITINA</b>  |                   |        |                    |                    |
| <b>165C</b> |                      |        |         |                    |                 |         |                   |                                    |         |                    | 430 mm            | 17"    | <b>SUPERTITINA</b> |                    |
|             | For waxing           |        |         |                    | 450 mm          | 17 3/4" | <b>MAXITITINA</b> |                                    |         |                    |                   |        |                    |                    |
|             |                      |        |         |                    |                 |         |                   | 430 mm                             | 17"     | <b>SUPERTITINA</b> |                   |        |                    |                    |
|             |                      |        |         |                    |                 |         |                   |                                    |         |                    |                   |        |                    |                    |





339VELCRO  
213VELCRO  
168VELCRO



339PELO  
213PELO  
168PELO



340N  
248N  
170N

340V  
248V  
170V

340B  
248B  
170B



DISC HOLDERS AND FELT DISCS

| Part No.         | Barcode       | Quantity | Description                                       | Weight |      | Dimensions                    | Weight                             |      |
|------------------|---------------|----------|---|--------|------|-------------------------------|------------------------------------|------|
|                  |               |          |   | Kg     | lbs  |                               | Kg                                 | lbs  |
| <b>339VELCRO</b> | 8024648015815 | 1        | Disc holder for felt and sponge discs with Velcro | 3,1    | 6.8  | 47x47xh 10 cm<br>18"x18"xh 4" | 3,5                                | 7.7  |
| <b>339PELO</b>   | 8024648015822 | 1        | Disc holder for felt and sponge discs with points | 2,6    | 5.7  |                               | 2,9                                | 6.4  |
| <b>213VELCRO</b> | 8024648002730 | 1        | Disc holder for felt and sponge discs with Velcro | 2,5    | 5.5  |                               | 2,8                                | 6.2  |
| <b>213PELO</b>   | 8024648007193 | 1        | Disc holder for felt and sponge discs with points | 2,4    | 5.3  |                               | 2,7                                | 6    |
| <b>168PELO</b>   | 8024648007209 | 1        | Disc holder for felt and sponge discs with points | 1,9    | 4.2  |                               | 2,2                                | 4.9  |
| <b>340N</b>      | 8024648015839 | 5        | Black felt disc (high abrasiveness)               | 360    | 12.7 | 53x53xh 10 cm<br>21"x21"xh 4" | 2,8                                | 6.2  |
| <b>340V</b>      | 8024648015853 | 5        | Green felt disc (medium abrasiveness)             | 270    | 9.5  |                               | 2,4                                | 5.3  |
| <b>340B</b>      | 8024648015846 | 5        | White felt disc (low abrasiveness)                | 150    | 5.3  |                               | 1,8                                | 4    |
| <b>248N</b>      | 8024648002778 | 5        | Black felt disc (high abrasiveness)               | 340    | 12   |                               | 2                                  | 4.4  |
| <b>248V</b>      | 8024648002785 | 5        | Green felt disc (medium abrasiveness)             | 260    | 9.2  |                               | 1,6                                | 3.5  |
| <b>248B</b>      | 8024648002792 | 5        | White felt disc (low abrasiveness)                | 140    | 5    | 47x47xh 10 cm<br>18"x18"xh 4" | 1                                  | 2.2  |
| <b>170N</b>      | 8024648002808 | 5        | Black felt disc (high abrasiveness)               | 250    | 8.8  |                               | 1,5                                | 3.3  |
| <b>170V</b>      | 8024648002815 | 5        | Green felt disc (medium abrasiveness)             | 200    | 7    |                               | 1,3                                | 2.9  |
| <b>170B</b>      | 8024648002822 | 5        | White felt disc (low abrasiveness)                | 100    | 3.5  |                               | 800                                | 28.2 |
|                  |               |          |   |        |      |                               | 42x42xh 12 cm<br>16"x16"x h 4 3/4" |      |

| Part No.         | Applications                           | Ø              | MACHINE         |             |
|------------------|--|----------------|-----------------|-------------|
| <b>339VELCRO</b> | Disc holder for felt and sponge discs  | 460 mm 18 1/8" | IPERTITINA PLUS |             |
| <b>339PELO</b>   |  |                | IPERTITINA      |             |
| <b>213VELCRO</b> |  | 430 mm 17"     | MAXITITINA      |             |
| <b>213PELO</b>   |  |                | 380 mm 15"      | SUPERTITINA |
| <b>168VELCRO</b> |  |                |                 |             |
| <b>168PELO</b>   |  |                |                 |             |
| <b>340N</b>      | Black felt for intensive cleaning      | 483 mm 19"     | IPERTITINA PLUS |             |
| <b>340V</b>      | Green felt for medium trouble cleaning |                | IPERTITINA      |             |
| <b>340B</b>      | White felt to wax and polish           |                |                 |             |

| Part No.    | Applications                           | Ø          | MACHINE     |
|-------------|--|------------|-------------|
| <b>248N</b> | Black felt for intensive cleaning      | 456 mm 18" | MAXITITINA  |
| <b>248V</b> | Green felt for medium trouble cleaning |            |             |
| <b>248B</b> | White felt to wax and polish           |            |             |
| <b>170N</b> | Black felt for intensive cleaning      | 406 mm 16" | SUPERTITINA |
| <b>170V</b> | Green felt for medium trouble cleaning |            |             |
| <b>170B</b> | White felt to wax and polish           |            |             |



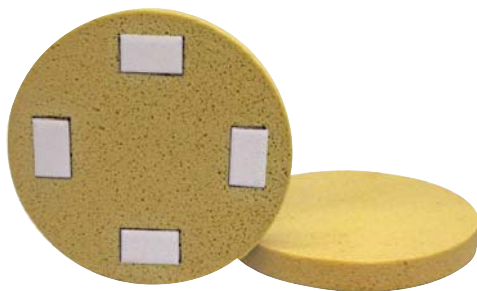
MADE IN ITALY



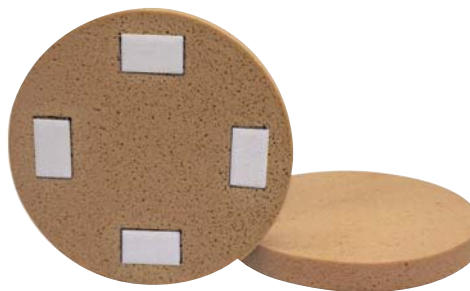
274RT490G100 274RT490G120 274RT490G150 274RT490G180  
274RT460G100 274RT460G120 274RT460G150 274RT460G180  
274RT410G100 274RT410G120 274RT410G150 274RT410G180



212  
167



219SPUSWE  
122SPUSWE



219SPUWEL  
122SPUWEL



214  
388

PACKAGE



CARTON BOX

## DOUBLE FACE SILICON CARBIDE MESH

| Part No.     | Barcode       | Box Icon | Description   | Icon 1 | Icon 2 | Icon 3  | Icon 4 |        |         |
|--------------|---------------|----------|---|--------|--------|---------|--------|--------|---------|
| 274RT490G80  | 8024648017321 | 5        | Double face silicon carbide mesh for floor finishing (wooden floor, etc.) | 80     | 490 mm | 19 1/4" | 400 gr |        |         |
| 274RT490G220 | 8024648017291 | 5        |   | 220    |        |         |        | 450 mm | 17 3/4" |
| 274RT460G80  | 8024648017246 | 5        |   | 80     | 406 mm | 16"     | 350 gr |        |         |
| 274RT460G220 | 8024648017215 | 5        |   | 220    |        |         |        | 14 oz  | 450 gr  |
| 274RT410G80  | 8024648017161 | 5        | 80  | 13 oz  | 400 gr | 14 oz   |        |        |         |
| 274RT410G220 | 8024648017130 | 5        | 220   |        |        |         | 12 oz  |        |         |
|              |               |          | Grit 100/120/150/180 also available                                       |        |        |         |        |        |         |

## GROUTING PADDLE, SPONGE DISCS, STEEL DISCS

| Part No.  | Barcode       | Box Icon | Description                                  | Weight 1 | Weight 2 | Dimensions 1  | Dimensions 2  | Weight 3 | Weight 4 |
|-----------|---------------|----------|--|----------|----------|---------------|---------------|----------|----------|
| 212       | 8024648002914 | 1        | Grouting paddle with non-abrasive rubber     | 5,6 Kg   | 12.4 lbs | 50x50xh 10 cm | 20"x20"xh 4"  | 5,9 Kg   | 13 lbs   |
| 167       | 8024648002921 | 1        |  | 4,4 Kg   | 9,7 lbs  |               |               | 4,7 Kg   | 10.4 lbs |
| 272 8     | 8024648002945 | 1        | Replacement rubber grouting blades, set of 8 | 1,7 Kg   | 3.8 lbs  | 25x15xh 10 cm | 10"x6"xh 4"   | 1,8 Kg   | 4 lbs    |
| 219SPUWEL | 8024648055774 | 5        | Sponge disc with Velcro                      | 200 gr   | 7 oz     | 47x47xh 25 cm | 18"x18"xh 10" | 1 Kg     | 2.2 lbs  |
| 219SPUSWE | 8024648087607 | 5        | Sweepex sponge disc with Velcro              | 200 gr   | 7 oz     |               |               | 1 Kg     | 2.2 lbs  |
| 122SPUWEL | 8024648054241 | 5        | Sponge disc with Velcro                      | 160 gr   | 5.6 oz   |               |               | 800 gr   | 28.2 oz  |
| 219SPUSWE | 8024648082770 | 5        | Sweepex sponge disc with Velcro              | 160 gr   | 5.6 oz   | 68x66xh 10 cm | 27"x26"xh 4"  | 800 gr   | 28.2 oz  |
| 214       | 8024648002983 | 1        | Steel disc                                   | 6 Kg     | 13.2 lbs |               |               | 7 Kg     | 15.4 lbs |
| 388       | 8024648002976 | 1        |  | 4,5 Kg   | 9.9 lbs  | 5,2 Kg        | 11.5 lbs      |          |          |

| Part No.  | Applications  | Icon 1 | IPERTITINA PLUS | IPERTITINA | MAXITITINA | SUPERTITINA |
|-----------|---|--------|-----------------|------------|------------|-------------|
| 212       | For power grouting  | 500 mm | 19 5/8"         | •          | •          | •           |
| 167       |   | 420 mm | 16 1/2"         | •          | •          | •           |
| 219SPUWEL | Sponge disc to emulsify the residue of cement base grout after the grouting phase | 460 mm | 18 1/8"         | •          | •          | •           |
| 219SPUSWE |   | 460 mm | 18 1/8"         | •          | •          | •           |
| 122SPUWEL |   | 410 mm | 16"             | •          | •          | •           |
| 219SPUSWE |   | 410 mm | 16"             | •          | •          | •           |
| 214       | For floating, smoothing of mortar base (mud beds)                                 | 600 mm | 23 5/8"         | •          | •          | •           |
| 388       |   | 510 mm | 20"             | •          | •          | •           |



FLOOR PREPARATION MACHINES





279 490  
279 450  
279 400



27450G36 27445G36 27440G36  
27450G100 27445G100 27440G100



27450W16 27445W16 27440W16  
27450W24 27445W24 27440W24  
27450W36 27445W36 27440W36



GR36



GR100



GR16



GR24



GR36

PACKAGE



CARTON BOX



BASE-PLATE (DISC HOLDER FOR ABRASIVE DISCS) AND DOUBLE FACE ABRASIVE DISCS

| Part No.  | Barcode       | Box Icon | Description                                       | Weight (Kg) | Weight (lbs) | Dimensions                     | Weight (Kg) | Weight (lbs) |
|-----------|---------------|----------|---|-------------|--------------|--------------------------------|-------------|--------------|
| 279 490   | 8024648015877 | 1        | Disc holder for abrasive discs & sanding discs    | 2,4 Kg      | 5.3 lbs      | 50x50xh 10 cm<br>20"x 20"xh 4" | 2,7 Kg      | 6 lbs        |
| 279 450   | 8024648002990 | 1        |   | 2,2 Kg      | 4.9 lbs      |                                | 2,5 Kg      | 5.5 lbs      |
| 279 400   | 8024648003003 | 1        |   | 1,8 Kg      | 4 lbs        |                                | 2,1 Kg      | 4.6 lbs      |
| 27450G36  | 8024648015884 | 5        | Double face abrasive disc made of silicon carbide | 330 gr      | 11.7 oz      | 50x50xh 10 cm<br>20"x 20"xh 4" | 1,9 Kg      | 4.2 lbs      |
| 27450G100 | 8024648015891 | 5        |   | 200 gr      | 7 oz         |                                | 1,3 Kg      | 2,9 lbs      |
| 27445G36  | 8024648003027 | 5        |   | 300 gr      | 10.6 oz      |                                | 1,8 Kg      | 4 lbs        |
| 27445G100 | 8024648008954 | 5        |   | 180 gr      | 6.4 oz       |                                | 1,2 Kg      | 2.6 lbs      |
| 27440G36  | 8024648003041 | 5        |   | 280 gr      | 10 oz        |                                | 1,5 Kg      | 3.3 lbs      |
| 27440G100 | 8024648003058 | 5        |   | 160 gr      | 5.7 oz       |                                | 1,1 Kg      | 2.4 lbs      |
| 27450W16  | 8024648015907 | 2        | Double face abrasive disc made of wolfram carbide | 1,2 Kg      | 2.6 lbs      | 50x50xh 10 cm<br>20"x 20"xh 4" | 2,7 Kg      | 6 lbs        |
| 27450W24  | 8024648015914 | 2        |   | 1,4 Kg      | 3 lbs        |                                | 3,1 Kg      | 6,8 lbs      |
| 27450W36  | 8024648015921 | 2        |   | 1,3 Kg      | 2.9 lbs      |                                | 2,9 Kg      | 6.4 lbs      |
| 27445W16  | 8024648008923 | 2        |   | 1,1 Kg      | 2.4 lbs      |                                | 2,5 Kg      | 5.5 lbs      |
| 27445W24  | 8024648008947 | 2        |   | 1,3 Kg      | 2.9 lbs      |                                | 2,9 Kg      | 6.4 lbs      |
| 27445W36  | 8024648008930 | 2        |   | 1,2 Kg      | 2.6 lbs      |                                | 2,7 Kg      | 6 lbs        |
| 27440W16  | 8024648008893 | 2        |   | 950 gr      | 33.5 oz      |                                | 2,2 Kg      | 4.9 lbs      |
| 27440W24  | 8024648008909 | 2        |   | 1 Kg        | 2.2 lbs      |                                | 2,3 Kg      | 5 lbs        |
| 27440W36  | 8024648008916 | 2        |   | 700 gr      | 24.7 oz      |                                | 1,7 Kg      | 3.8 lbs      |

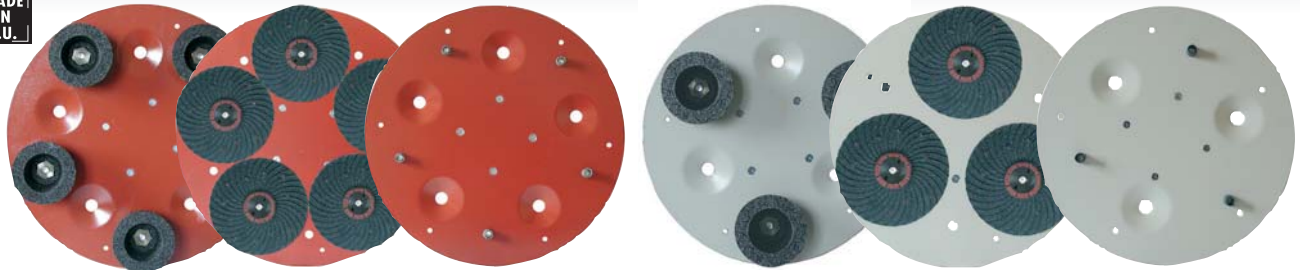
| Part No.  | Applications  | Disc Diameter | Disc Thickness | MACHINE                  | Part No.   | Applications   | Disc Diameter | Disc Thickness | MACHINE            |
|-----------|---|---------------|----------------|--------------------------|--|--|---------------|----------------|--------------------|
| 279 490   | Disc holder for abrasive & sanding discs                          | 490 mm        | 19 1/4"        | - IPERT. PLUS/IPERTITINA | 27450W16<br>27450W24<br>27450W36                                     | For grinding of cement, resin, terracotta, metal   | 500 mm        | 20"            | 16 IPERTITINA PLUS |
| 279 450   |   | 450 mm        | 17 3/4"        | - MAXITITINA             |  |  |               |                | 24 IPERTITINA      |
| 279 400   |   | 400 mm        | 15 3/4"        | - SUPERTITINA            |  |  |               |                | 36 IPERTITINA      |
| 27450G36  | For sanding and abrading applications & light surface preparation | 500 mm        | 20"            | 36 IPERTITINA PLUS       | 27445W16<br>27445W24<br>27445W36<br>27440W16<br>27440W24<br>27440W36 | For scarifying (scratching) surfaces to improve the bonding of adhesives and to remove sealers | 450 mm        | 17 3/4"        | 16 MAXITITINA      |
| 27450G100 |   |               |                | 100 IPERTITINA           |  |  |               |                | 24 MAXITITINA      |
| 27445G36  |   | 450 mm        | 17 3/4"        | 36 MAXITITINA            |  |  |               |                | 36 MAXITITINA      |
| 27445G100 |   |               |                | 100 MAXITITINA           |  |  |               |                | 16 SUPERTITINA     |
| 27440G36  |   | 400 mm        | 15 3/4"        | 36 SUPERTITINA           |  |  |               |                | 24 SUPERTITINA     |
| 27440G100 |   |               |                | 100 SUPERTITINA          |  |  |               |                | 36 SUPERTITINA     |



FLOOR PREPARATION MACHINES

# ABRASIVE TOOLS

MADE IN E.U.



250 IPER 250

249 IPER 249

250P MIPER 250PMOLE

230

229

230P MOLE



273W16

273W6



273



27418G16C  
27418G24C  
27418G36C



273CHIODI



273SPI100



158GF03D

PACKAGE



CARTON BOX

## DISC / GRINDSTONE HOLDER FOR ABRASIVE DISCS, CUPWHEELS, & CARBIDE PLATES

| Part No.   | Barcode       | Box | Description   | Weight | Dimensions | Weight        | Dimensions    |
|------------|---------------|-----|---|--------|------------|---------------|---------------|
| 250IPER    | 8024648015990 | 1   | Blade with 5 silicon carbide abrasive grindstones grit 16 | 9,6 Kg | 21.2 lbs   | 50x50xh 10 cm | 20"x20"x h 4" |
| 250        | 8024648003126 | 1   | Blade with 5 silicon carbide abrasive grindstones grit 16 | 9,6 Kg | 21.2 lbs   |               |               |
| 230        | 8024648003133 | 1   | Blade with 3 silicon carbide abrasive grindstones grit 16 | 6,6 Kg | 14.6 lbs   | 50x50xh 10 cm | 20"x20"x h 4" |
| 249IPER    | 8024648016010 | 1   | Blade with 5 silicon carbide abrasive flap discs grit 16  | 7,3 Kg | 16 lbs     |               |               |
| 249        | 8024648003157 | 1   | Blade with 5 silicon carbide abrasive flap discs grit 16  | 7,3 Kg | 16 lbs     | 50x50xh 10 cm | 20"x20"x h 4" |
| 229        | 8024648003164 | 1   | Blade with 3 silicon carbide abrasive grindstones grit 16 | 5,2 Kg | 11.5 lbs   |               |               |
| 250P MIPER | 8024648016027 | 1   | Abrasive disc / grindstone holder (nr.5)                  | 6,2 Kg | 13.7 lbs   | 50x50xh 10 cm | 20"x20"x h 4" |
| 250P MOLE  | 8024648003089 | 1   | Abrasive disc / grindstone holder (nr.5)                  | 6,2 Kg | 13.7 lbs   |               |               |
| 230P MOLE  | 8024648003096 | 1   | Abrasive disc / grindstone holder (nr.3)                  | 4,6 Kg | 10.2 lbs   | 50x50xh 10 cm | 20"x20"x h 4" |
|            |               |     |   | 10 Kg  | 22 lbs     |               |               |
|            |               |     |   | 10 Kg  | 22 lbs     |               |               |
|            |               |     |   | 7 Kg   | 15.4 lbs   |               |               |
|            |               |     |   | 7,6 Kg | 17.7 lbs   |               |               |
|            |               |     |   | 7,6 Kg | 17.7 lbs   |               |               |
|            |               |     |   | 5,5 Kg | 12 lbs     |               |               |
|            |               |     |   | 6,5 Kg | 10.3 lbs   |               |               |
|            |               |     |   | 6,5 Kg | 10.3 lbs   |               |               |
|            |               |     |   | 4,9 Kg | 10.8 lbs   |               |               |

| Part No.   | Applications  | Grindstone | Grindstone | IPERTITINA PLUS | IPERTITINA | MAXITITINA | SUPERTITINA |
|------------|---|------------|------------|-----------------|------------|------------|-------------|
| 250IPER    | For abrading and polishing cement, resin, terracotta surfaces.<br>For grinding smooth surfaces to improve the bonding of adhesives.<br>For removal of old grout / thinset residue when removing old floors. | 16         | 490 mm     | 19 1/4"         | •          | •          | -           |
| 250        |   | 16         | 490 mm     | 19 1/4"         | -          | -          | •           |
| 230        |   | 16         | 420 mm     | 16 1/2"         | -          | -          | •           |
| 249IPER    |   | 16         | 490 mm     | 19 1/4"         | •          | •          | -           |
| 249        |   | 16         | 490 mm     | 19 1/4"         | -          | -          | •           |
| 229        |   | 16         | 420 mm     | 16 1/2"         | -          | -          | •           |
| 250P MIPER |   | -          | 490 mm     | 19 1/4"         | •          | •          | -           |
| 250P MOLE  |   | -          | 490 mm     | 19 1/4"         | -          | -          | •           |
| 230P MOLE  |   | -          | 420 mm     | 16 1/2"         | -          | -          | •           |

## ABRASIVE TOOLS

| Part No.  | Barcode       | Box | Description                                      | Weight | Dimensions | Weight        | Dimensions            |
|-----------|---------------|-----|--|--------|------------|---------------|-----------------------|
| 273W16    | 8024648003102 | 5   | Wolfram carbide plate grit 16                    | 1 Kg   | 2.2 lbs    | 25x15xh 10 cm | 10"x20"xh 4"          |
| 273W6     | 8024648003119 | 5   | Wolfram carbide plate grit 6                     | 1 Kg   | 2.2 lbs    |               |                       |
| 273       | 8024648003140 | 5   | Silicon carbide cup wheel grit 6 (14 MA fitting) | 600 gr | 21.2 oz    | 25x25xh 10 cm | 10"x10"xh 4"          |
| 27418G16C | 8024648014139 | 5   | Single face silicon carbide flap wheel grit 16   | 150 gr | 5.3 oz     |               |                       |
| 27418G24C | 8024648079596 | 5   | Single face silicon carbide flap wheel grit 24   | 150 gr | 5.3 oz     | 20x20xh 5 cm  | 7 7/8" x 7 7/8" xh 2" |
| 27418G36C | 8024648014146 | 5   | Single face silicon carbide flap wheel grit 36   | 150 gr | 5.3 oz     |               |                       |
| 273CHIODI | 8024648003188 | 6   | Grindstone with 6 wolfram carbide nails          | 230 gr | 8.1 oz     | 8x8xh 5 cm    | 3 1/8" x 3 1/8" xh 2" |
| 273SPI100 | 8024648005564 | 1   | Wolfram carbide nails (100 pcs per box)          | 250 gr | 8.8 oz     |               |                       |
| 158GF03D  | 8024648017413 | 5   | 14 MA metal flange for abrasive wheels/discs     | 45 gr  | 1.6 oz     | -             | -                     |

| Part No.  | Applications  | Grindstone | Grindstone | Number of tools for blade |         |        |
|-----------|---|------------|------------|---------------------------|---------|--------|
|           |   |            |            | 490 mm                    | 19 1/4" | 420 mm |
| 273W16    | For removing thinsets, adhesive, overspray, etc...<br>For abrading and polishing cement, resin, terracotta surfaces.<br>For scarifying smooth surfaces to improve the bonding of adhesives.<br>For removal of grout residue when removing old floors. | 16         | 125 mm     | 5"                        | 5       | 3      |
| 273W6     |   | 6          | 125 mm     | 5"                        | 5       | 3      |
| 273       |   | 16         | 110 mm     | 4 3/8"                    | 5       | 3      |
| 27418G16C |   | 16         | 178 mm     | 7"                        | 5       | 3      |
| 27418G24C |   | 24         | 178 mm     | 7"                        | 5       | 3      |
| 27418G36C |   | 36         | 178 mm     | 7"                        | 5       | 3      |
| 273CHIODI |   | -          | 70 mm      | 2 3/4"                    | 6       | 5      |



**FLOORING SUPPLY SHOP**

www.FlooringSupplyShop.com 323-731-8453

