

BACK-FINISHER BULLDOG FOR CONNECTION IN LINE WITH BI-BULLDOG ADV OR BULLDOG ADV



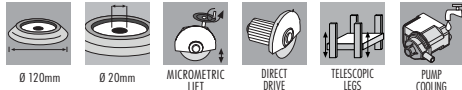
MACHINES FOR SPECIAL JOBS

AVAILABLE BLADES



45° FINISHING MILL
90° EDGE FINISHING WHEEL

TECHNICAL CHARACTERISTICS



PACKAGE



- Back-finisher Bulldog for connection in line with a Bi-Bulldog or a Bulldog machine.
- Extensions and trolley are not included.
- Most of the porcelain tiles have a textured relief in the back. When there's the need to install a tile with exposed edge (being the edge just straight or half-bullnosed) the texture would remain exposed requiring heavy use of grout to try to hide it. Bull-Back-Finisher solves this problem since it is designed to remove the tile back-texture in the area close to the edge of the tile.
- The removal of the back-texture can be parallel (see image A) or 45° (see image B) according to

- the diamond wheel in use.
- When working with 45° diamond wheel (see image A) the machine removes a thin layer of "back-tile-texture". The result is a clean area (free from back-texture) close to the edge of the tile. In this way just a layer of material is removed resulting in a very thin joint once the tile is installed.
- When working with 90° diamond wheel (see image B) the machine produces a small 45° bevel on the back of the tile-edge. This allows to remove the tile back-texture creating a joint (bigger or smaller according with the depth of the bevel) once the tile is installed.
- Heavy duty water pumps provides superior wheel cooling.
- Supplied with: user and maintenance manual, keys kit.

MODEL SPECIFICATIONS

Part No.	Barcode	Box	Lightning Bolt	M	Motor	Motor	Wheel	Wheel
427 BARIOHEU	8024648094179	1	230V 50 Hz	Single-phase	1,5 HP / 1,1 kW	2800	-	2800
427 BARIOHBR	8024648094629	1	230V 60 Hz	Single-phase	1,5 HP / 1,1 kW	3360	-	3360
427 BARIOHUS	8024648094391	1	110V 60 Hz	Single-phase	1,5 HP / 1,1 kW	3360	-	3360
427 BARIOHGB	8024648094186	1	110V 50 Hz	Single-phase	1,5 HP / 1,1 kW	2800	-	2800

MACHINE DIMENSIONS / WEIGHT

Model	Profile	Max lenght of cut	Max tile width	Machine Dimensions	Weight	Package Dimensions	Weight
BACK-FINISHER BULLDOG FOR CONNECTION IN LINE		120 cm 47 1/4"	60 cm 23 5/8"	63x75x h 90 cm 25"x29 1/2"x h 35 1/2"	41 Kg 90 lbs	90x72x h 90 cm 35 1/2"x28 1/8"x h 35 1/2"	56,5 Kg 124.6 lbs

CONNECTION SCHEME ACCORDING TO THE BULLDOG/BI-BULLDOG VERSION AND THE RESULT YOU WANT TO ACHIEVE*

- Back-Finisher-Bulldog for connection in line needs to be used necessarily connected with Bulldog or BiBulldog.
- Back-Finisher Bulldog cannot be connected to automatic versions of the Bulldog and Bi-Bulldog.
- On the contrary it fits both manual and wheel-feed-kit versions.
- Since once connected with a Bi-Bulldog the machines combo is quite long, it is strongly recommended to equip the system with the wheel-feed-kit. Please be sure to have the machine equipped with "120 cm universal table" (part no. 039CA00ABB) otherwise the wheel-feed-kit does not work. If not equipped with the "universal table", this can be add as accessory.
- When connecting to a single head manual Bulldog and want the wheel-feed-kit system it is necessary to equip the machines with the "universal table" and the side extensions (unless those parts have been already bought in the past as accessories). Otherwise the wheel-feed-kit does not work.
- When connected to a wheel-feed-kit machines (being it single or double head), it is not necessary to buy a new wheel feed-kit but it is enough to replace the belt with a longer one (art. 286DT14D e 286DT15D).
- Given the huge number of variables involved, you should always consult Raimondi experts to check and choose the proper parts to connect in line your machine with the Back-Finisher-Bulldog.

What machine do I have	What do I add						What do I obtain
	Back-Finisher for connection	Guides	Belt	Wheel-Feed-Kit	Universal Trolley	Side extensions	
Automatic Bi-Bulldog	It is not possible to connect the back-finisher to automatic versions						
Bi-Bulldog with wheel-feed-kit	427 BARIOHEU 427 BARIOHBR	114TOK05A	286DT14D	standard	standard	standard	Back-Finisher-Bulldog and Bi-Bulldog in line with wheel-feed-kit
Bi-Bulldog manual	427 BARIOHUS 427 BARIOHGB	114TOK05A	-	419AVBU BBRIH	standard	standard	Back-Finisher-Bulldog and Bi-Bulldog in line with wheel-feed-kit
Bi-Bulldog manual	427 BARIOHUS 427 BARIOHGB	114TOK05A	-	standard	standard	standard	Back-Finisher-Bulldog and Bi-Bulldog in line with manual feed
Bulldog Automatic	It is not possible to connect the back-finisher to automatic versions						
Bulldog wheel-feed-kit	427 BARIOHEU 427 BARIOHBR	114TOK06A	286DT15D	standard	standard	standard	Back-Finisher-Bulldog and Bulldog in line with wheel-feed-kit
Bulldog manual	427 BARIOHUS 427 BARIOHUS	114TOK06A	-	419AVBU BURIH	039CA00ABB	438PRO3A	Back-Finisher-Bulldog and Bulldog in line with wheel-feed-kit
Bulldog manual	427 BARIOHUS 427 BARIOHUS	114TOK06A	-	standard	standard	standard	Back-Finisher-Bulldog and Bulldog in line with manual feed

* Given the huge number of variables involved, you should always consult Raimondi experts to verify the correct configuration.

ACCESSORIES/SPARE PARTS FOR BULLDOG, BI-BULLDOG AND BACK-FINISHER BULLDOG

MADE IN ITALY



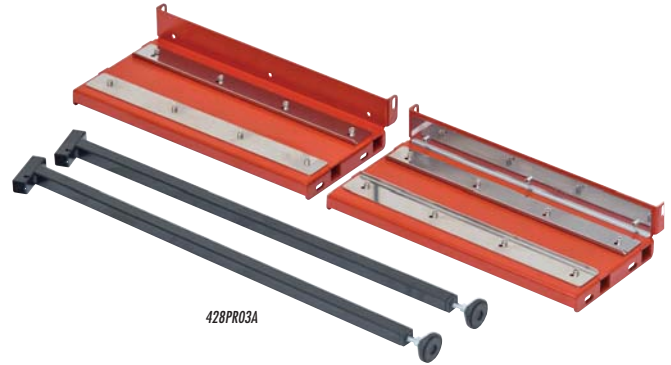
114TOK05A
114TOK06A



419AVBU



039CA00ABB



428PR03A

MACHINES FOR SPECIAL JOBS

ACCESSORIES FOR BACK-FINISHER BULLDOG FOR CONNECTION IN LINE

Part No.			Description				
114TOK05A	8024648061577	1	Pair of guides (1.653 mm) to connect back-finisher with Bi-Bulldog	170x10x10 cm	67"x4"x4"	5,8 Kg	12.8 lbs
114TOK06A	8024648093219	1	Pair of guides (1.415 mm) to connect back-finisher with Bulldog			5,2 Kg	11.5 lbs
286DT14D	8024648094551	1	Belt for updating wheel-feed-kit (back-finisher + Bi-Bulldog)	-	-	-	-
286DT15D	8024648094568	1	Belt for updating wheel-feed-kit (back-finisher + Bulldog)	-	-	-	-
419AVBU BBRH	8024648094452	1	Wheel-feed-kit for Back-finisher + Bi-Bulldog	-	-	-	-
419AVBU BURH	8024648094476	1	Wheel-feed-kit for Back-finisher + Bulldog	-	-	-	-

TABLES FOR BULLDOG ADV, BI-BULLDOG ADV AND BACK-FINISHER BULLDOG FOR CONNECTION IN LINE

Part No.			Description				
039CA00AB	8024648082756	1	"Universal table" for tiles max length 80 cm (31 1/2"), width 40/60 cm (15 3/4" - 23 5/8") and height ≥ 4cm (1 1/2")	90x25x9 cm	35 1/2"x9 7/8"x3 1/2"	7,5 Kg	16.5 lbs
039CA00ABB	8024648082763	1	"Universal table" for tiles max length 120 cm (47 1/4"), width 40/60 cm (15 3/4" - 23 5/8") and height ≥ 4cm (1 1/2")	137x25x9 cm	54"x9 7/8"x3 1/2"	9,5 Kg	21 lbs

SIDE EXTENSIONS FOR BULLDOG ADV, BI-BULLDOG ADV AND BACK-FINISHER BULLDOG

Part No.			Description				
428PR03A	8024648062161	1	Side extensions (pair) for Bulldog Adv, Bi-Bulldog Adv and Back-finisher Bulldog	80x33x21 cm	31 1/2"x13"x8 1/4"	13 Kg	28.6 lbs

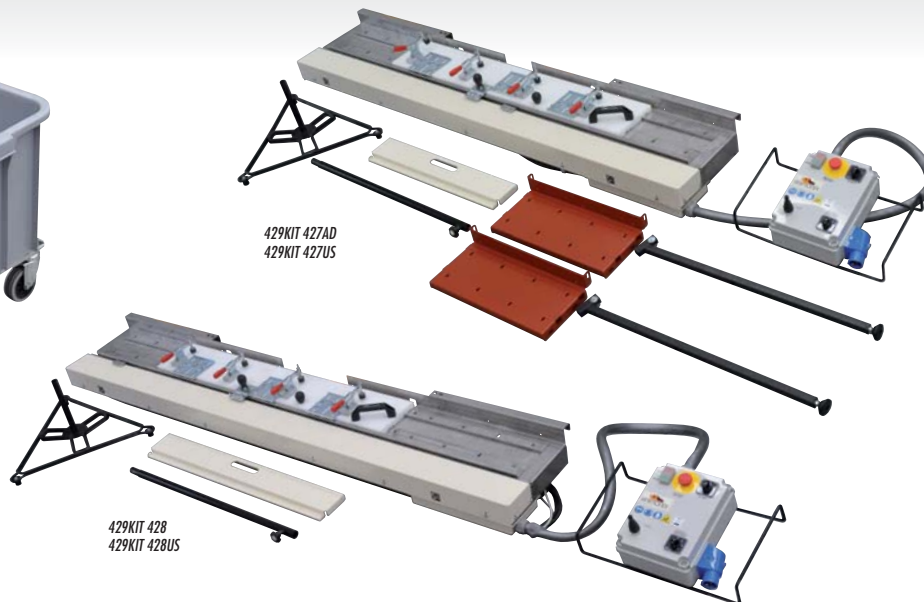
ACCESSORIES/MACHINES COMBINATIONS

Part No.	Description	BULLDOG ADV	BI-BULLDOG ADV	BULLDOG ADV WITH WHEEL FEED KIT	BI-BULLDOG ADV WITH WHEEL FEED KIT	BULLDOG ADV AUTO	BI-BULLDOG ADV AUTO	STAND ALONE BACK-FINISHER BULLDOG	BACK-FINISHER BULLDOG FOR CONNECTION IN LINE
114TOK05A	Pair of guides (1.415 mm) to connect back-finisher with Bulldog	-	•	-	•	-	-	-	•
114TOK06A	Pair of guides (1.415 mm) to connect back-finisher with Bulldog	•	-	•	-	-	-	-	•
286DT14D	Belt for updating wheel-feed-kit (back-finisher + Bi-Bulldog)	-	-	-	•	-	-	-	•
286DT15D	Belt for updating wheel-feed-kit (back-finisher + Bulldog)	-	-	•	-	-	-	-	•
419AVBU BBRH	Wheel-feed-kit for back-finisher + Bi-Bulldog	-	•	-	-	-	-	-	•
419AVBU BURH	Wheel-feed-kit for back-finisher + Bulldog	•	-	-	-	-	-	-	•
039CA00AB	"Universal table" for tiles max length 80 cm (31 1/2")	standard	-	-	-	-	-	-	•
039CA00ABB	"Universal table" for tiles max length 120 cm (47 1/4")	•*	standard	standard	standard	standard	standard	standard	•
428PR03A	Side extensions (pair) for Bulldog Adv, Bi-Bulldog Adv and Back-finisher Bulldog	•	standard	standard	standard	standard	standard	standard	•

*The "universal" table length 120 cm can be mounted on Bull-Dog Adv only in combination with the side extensions (cod.428PR03A).



Removable tank kit and pump



429KIT 427AD
429KIT 427US

429KIT 428
429KIT 428US



MACHINES FOR SPECIAL JOBS

REMOVABLE TANK KIT AND PUMP FOR BULLDOG ADV E BI-BULLDOG ADV

Part No.			Description		
429KITVA230	8024648071835	1	Removable tank kit and pump for Bulldog Adv 230V 50 Hz	-	-
429KITVA220H6	8024648075093	1	Removable tank kit and pump for Bulldog Adv 230V 60 Hz	-	-
429KITVA110	8024648071828	1	Removable tank kit and pump for Bulldog Adv 110V 50 Hz	-	-
429KITVA110/6	8024648081278	1	Removable tank kit and pump for Bulldog Adv 110V 60 Hz	-	-
429KITV 230	8024648072108	1	Removable tank kit and pump for Bi-Bulldog Adv 230V 50 Hz	-	-
429KITV 230BB	8024648071811	1	Removable tank kit and pump for Bi-Bulldog Adv 230V 60 Hz	-	-
429KITV 110BB	8024648071804	1	Removable tank kit and pump for Bi-Bulldog Adv 110V 50 Hz	-	-
429KITV 110B6	8024648081261	1	Removable tank kit and pump for Bi-Bulldog Adv 110V 60 Hz	-	-

MANUAL FEED KIT WITH WHEEL FOR BULLDOG ADV AND BI-BULLDOG ADV

Part No.			Description		
429KIT 427AD	8024648071194	1	Automation kit for Bulldog ADV 230V 50/60 Hz	240x65xh 70 cm 94"x25"xh 27"	86 Kg 190 lbs
429KIT 427US	8024648071781	1	Automation kit for Bulldog ADV 110V 50/60 Hz		
429KIT 428	8024648071200	1	Automation kit for Bi-Bulldog ADV 230V 50/60 Hz		90 Kg 198 lbs
429KIT 428US	8024648071798	1	Automation kit for Bi-Bulldog ADV 110V 50/60 Hz		

MANUAL FEED KIT WITH WHEEL FOR BULLDOG ADV AND BI-BULLDOG ADV

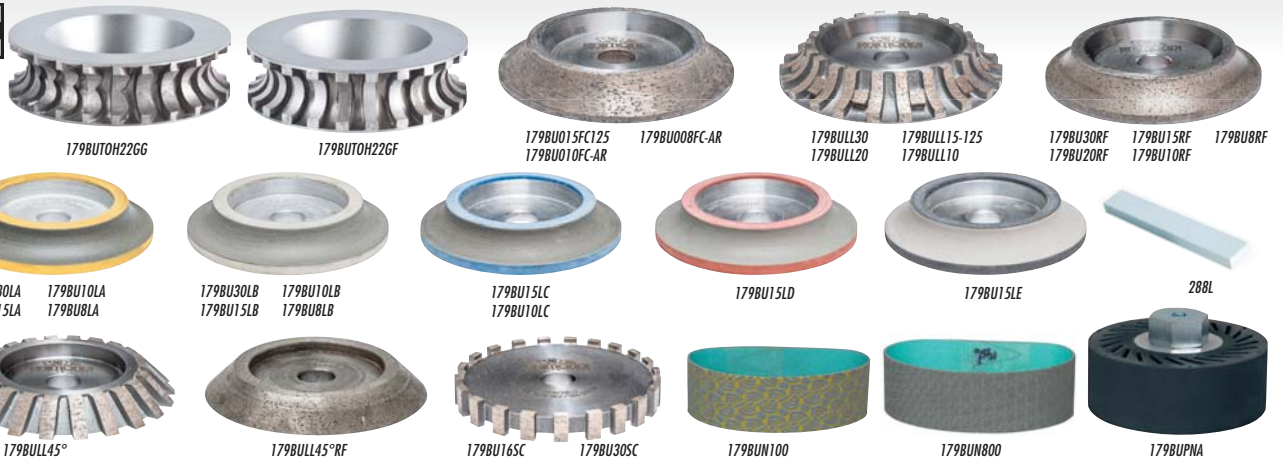
Part No.			Description		
419AVBU BULL	8024648073785	1	Manual feed kit with wheel for Bulldog Adv	-	-
419AVBU BIBU	8024648073778	1	Manual feed kit with wheel for Bi-Bulldog Adv	-	-

ACCESSORIES/MACHINES COMBINATIONS

Part No.	Description	BULLDOG ADV	BI-BULLDOG ADV	BULLDOG ADV WITH WHEEL FEED KIT	BI-BULLDOG ADV WITH WHEEL FEED KIT	BULLDOG ADV AUTO	BI-BULLDOG ADV AUTO
429KITVA230	Removable tank kit and pump for Bulldog Adv 230V 50 Hz	•	-	•	-	standard	-
429KITVA220H6	Removable tank kit and pump for Bulldog Adv 230V 60 Hz	•	-	•	-	standard	-
429KITVA110	Removable tank kit and pump for Bulldog Adv 110V 50 Hz	•	-	•	-	standard	-
429KITVA110/6	Removable tank kit and pump for Bulldog Adv 110V 60 Hz	•	-	•	-	standard	-
429KITV 230	Removable tank kit and pump for Bulldog Adv 110V 50 Hz	-	•	-	•	-	standard
429KITV 230BB	Removable tank kit and pump for Bi-Bulldog Adv 230V 60 Hz	-	•	-	•	-	standard
429KITV 110BB	Removable tank kit and pump for Bi-Bulldog Adv 110V 50 Hz	-	•	-	•	-	standard
429KITV 110B6	Removable tank kit and pump for Bi-Bulldog Adv 110V 60 Hz	-	•	-	•	-	standard
429KIT 427AD	Automation kit for Bulldog ADV 230V 50/60 Hz	•	-	-	-	standard	-
429KIT 427US	Automation kit for Bulldog ADV 110V 50/60 Hz	•	-	-	-	standard	-
429KIT 428	Automation kit for Bi-Bulldog ADV 230V 50/60 Hz	-	•	-	-	-	standard
429KIT 428US	Automation kit for Bi-Bulldog ADV 110V 50/60 Hz	-	•	-	-	-	standard
419AVBU BULL	Manual feed kit with wheel for Bulldog Adv	•	-	standard	-	-	-
419AVBU BIBU	Manual feed kit with wheel for Bi-Bulldog Adv	-	•	-	standard	-	-

DIAMOND WHEELS AND DIAMOND BELTS

MADE IN ITALY



Part No.	Barcode	Box	Profile	Profile	BULLDOG BI-BULLDOG	BACK-FINISHER BULLDOG	Profile	Profile	Box	Weight	Weight
----------	---------	-----	---------	---------	--------------------	-----------------------	---------	---------	-----	--------	--------

FULL BULLNOSE SEGMENTED DIAMOND WHEEL FOR SHAPING FOR BULLDOG AND BI-BULLDOG														
179BUTOH22GG	8024648093974	1		11 mm	7/16"	•	—	125mm	5"	GG*	13x13xh 4 cm	5 3/8"x5 3/8"xh 1 5/8"	2 Kg	4.4 lbs

FULL BULLNOSE SEGMENTED DIAMOND WHEEL FOR FINISHING FOR BULLDOG AND BI-BULLDOG														
179BUTOH22GF	8024648093967	1		11 mm	7/16"	•	—	125mm	5"	GF*	13x13xh 4 cm	5 3/8"x5 3/8"xh 1 5/8"	2 Kg	4.4 lbs

1/2 BULLNOSE MILLING DIAMOND WHEELS CONTINUOUS RIM FOR BULLDOG AND BI-BULLDOG														
179BU015FC125	8024648067906	1		15 mm	5/8"	•	—	125 mm	5"	GSG*	13x13xh 4 cm	5 3/8"x5 3/8"xh 1 5/8"	1 Kg	2.2 lbs
179BU010FC-AR	8024648067920	1		10 mm	3/8"	•	—	120 mm	4 3/4"	GSG*				
179BU008FC-AR	8024648067265	1		8 mm	5/16"	•	—	115 mm	4 1/2"	GSG*				

1/2 BULLNOSE SEGMENTED DIAMOND WHEELS FOR SHAPING FOR BULLDOG AND BI-BULLDOG														
179BULL30	8024648061690	1		30 mm	1 3/16"	•	—	160 mm	6 1/4"	GG*	17x17xh 5 cm	6 5/8"x6 5/8"xh 2"	2 Kg	4.4 lbs
179BULL20	8024648060563	1		20 mm	3/4"	•	—	150 mm	5 7/8"	GG*			1,4 Kg	3.1 lbs
179BULL15-125	8024648067227	1		15 mm	5/8"	•	—	130 mm	5 1/8"	GG*	13x13xh 4 cm	5 3/8"x5 3/8"xh 1 5/8"	900 gr	31.8 oz
179BULL12	8024648087959	1		12 mm	15/32"	•	—	125 mm	5"	GG*				
179BULL10	8024648011398	1		10 mm	3/8"	•	—	120 mm	4 3/4"	GG*				

1/2 BULLNOSE CONTINUOUS RIM DIAMOND WHEELS FOR FINISHING FOR BULLDOG AND BI-BULLDOG														
179BU30RF	8024648061874	1		30 mm	1 3/16"	•	—	160 mm	6 1/4"	GF*	17x17xh 5 cm	6 5/8"x6 5/8"xh 2"	2 Kg	4.4 lbs
179BU20RF	8024648061751	1		20 mm	3/4"	•	—	150 mm	5 7/8"	GF*			1,4 Kg	3.1 lbs
179BU15RF125	8024648013873	1		15 mm	5/8"	•	—	125 mm	5"	GF*	13x13xh 4 cm	5 3/8"x5 3/8"xh 1 5/8"	1,15 Kg	2.54 lbs
179BU12RF	8024648087966	1		12 mm	15/32"	•	—	125 mm	5"	GF*				
179BU10RF	8024648011701	1		10 mm	3/8"	•	—	120 mm	4 3/4"	GF*				
179BU8RF	8024648013880	1		8 mm	5/16"	•	—	115 mm	4 1/2"	GF*				

1/2 BULLNOSE CONTINUOUS RIM DIAMOND WHEELS FOR POLISHING FOR BULLDOG AND BI-BULLDOG														
179BU30LA	8024648061829	1		30 mm	1 3/16"	•	—	160 mm	6 1/4"	400	17x17xh 5 cm	6 5/8"x6 5/8"xh 2"	1,8 Kg	3.9 lbs
179BU30LB	8024648061836	1		30 mm	1 3/16"	•	—	160 mm	6 1/4"	800	17x17xh 5 cm	6 5/8"x6 5/8"xh 2"	1,8 Kg	3.9 lbs
179BU15LA	8024648013897	1		15 mm	5/8"	•	—	125 mm	4 7/8"	400	13x13xh 4 cm	5 3/8"x5 3/8"xh 1 5/8"	330 gr	11.6 oz
179BU15LB	8024648013927	1		15 mm	5/8"	•	—	125 mm	4 7/8"	800	13x13xh 4 cm	5 3/8"x5 3/8"xh 1 5/8"	330 gr	11.6 oz
179BU15LC	8024648054364	1		15 mm	5/8"	•	—	125 mm	4 7/8"	1500	13x13xh 4 cm	5 3/8"x5 3/8"xh 1 5/8"	330 gr	11.6 oz
179BU15LD	8024648054371	1		15 mm	5/8"	•	—	125 mm	4 7/8"	1800	13x13xh 4 cm	5 3/8"x5 3/8"xh 1 5/8"	330 gr	11.6 oz
179BU15LE	8024648054388	1		15 mm	5/8"	•	—	125 mm	4 7/8"	3500	13x13xh 4 cm	5 3/8"x5 3/8"xh 1 5/8"	330 gr	11.6 oz
179BU10LA	8024648013903	1		10 mm	3/8"	•	—	120 mm	4 3/4"	400	13x13xh 4 cm	5 3/8"x5 3/8"xh 1 5/8"	330 gr	11.6 oz
179BU10LB	8024648013934	1		10 mm	3/8"	•	—	120 mm	4 3/4"	800	13x13xh 4 cm	5 3/8"x5 3/8"xh 1 5/8"	330 gr	11.6 oz
179BU8LA	8024648013910	1		8 mm	5/16"	•	—	115 mm	4 1/2"	400	13x13xh 4 cm	5 3/8"x5 3/8"xh 1 5/8"	330 gr	11.6 oz
179BU8LB	8024648013941	1		8 mm	5/16"	•	—	115 mm	4 1/2"	800	13x13xh 4 cm	5 3/8"x5 3/8"xh 1 5/8"	330 gr	11.6 oz

FLAT (90°EDGE) SEGMENTED DIAMOND WHEEL (SHAPING) FOR BULLDOG, BI-BULLDOG AND BACK-FINISHER BULLDOG														
179BULL45°	8024648011411	1		15 mm	5/8"	•	—	120 mm	4 3/4"	GG*	13x13xh 4 cm	5 3/8"x5 3/8"xh 1 5/8"	830 gr	29.30 oz

SEGMENTED DIAMOND WHEEL 45° PROFILE FOR JOLLY AND BEVEL FOR BULLDOG AND BI-BULLDOG														
179BULL45°RF	8024648017635	1		15 mm	5/8"	•	•	120 mm	4 3/4"	GF*	13x13xh 4 cm	5 3/8"x5 3/8"xh 1 5/8"	1.4 Kg	3.1 lbs

CONTINUOUS RIM DIAMOND WHEEL 45° PROFILE JOLLY AND BEVEL FOR FINISHING FOR BULLDOG, BI-BULLDOG AND BACK-FINISHER BULLDOG														
179BU16SC	8024648016904	1		16 mm	5/8"	•	•	120 mm	4 3/4"	GG*	13x13xh 4 cm	5 3/8"x5 3/8"xh 1 5/8"	900 gr	31.8 oz
179BU30SC	8024648061881	1		32 mm	1 1/4"	•	—	120 mm	4 3/4"	GG*	13x13xh 4 cm	5 3/8"x5 3/8"xh 1 5/8"	1,4 Kg	3.1 lbs

*VCG=very course grit *CG=course grit *FG=fine grit

FLAT (90°EDGE) DIAMOND BAND (FINISHING AND POLISHING) FOR BULLDOG AND BI-BULLDOG														
179BUN100	8024648016775	1		38 mm	1 1/2"	•	—	100 mm	4"	D100	13x13xh 4 cm	5 3/8"x5 3/8"xh 1 5/8"	100 gr	3.4 oz
179BUN400	8024648016782	1		38 mm	1 1/2"					D400				
179BUN800	8024648016799	1		38 mm	1 1/2"					D800				

RUBBER DRUM HOLDER FOR DIAMOND BAND FOR BULLDOG AND BI-BULLDOG													
179BUPNA	8024648016935	1		Description									
				Rubber drum holder h 38 mm (1 1/2")						13x13xh 4 cm	5 3/8"x5 3/8"xh 1 5/8"	500 gr	17 oz

DRESSING/SHARPENING STONES														
288 L	8024648013965	6	Dressing-sharpening stones 30x200x10 mm (1 3/16"x7 7/8"x13/32")								10x 20xh 2 cm	4"x8"xh 25/32"	450 gr	15.9 oz

MACHINES FOR SPECIAL JOBS